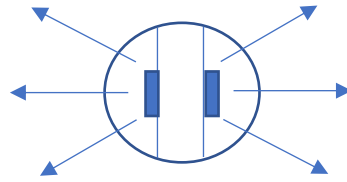


RoHS

Single and Double Sided T12 LED Tube



Specifications:

- Lumens per watt: 120
- Rated life: 50,000 hrs.
- CRI: >80
- Power factor: >.9
- Distribution: 120 degree beam spread (single)
2 @ 180, 120 degree beam spread (double)
- Frequency: 50-60 Hz
- Operating Temp.: -10F to 105F
- Construction: Aluminum Body / Polycarbonate Lens

Ordering Information: (Example) LT12-DS-852-CL50-SP

Item	Sides	Length	Watts	Lens	Color	Base
LT12 - LEDT12	SS - Single	2	8	CL - Clear	30 - 3000k	BP - Med. Bi-pin
	DS - Double		15	FR - Frosted	35 - 3500k	
		6	20		40 - 4000k	RD - Recessed Dbl. Contact
			40		50 - 5000k	
		8	26			RDR - Rec. Dbl. Contact Rotating
			40			
		10	52			SP - Single Pin
			36			
			65			

Prince LED tube lamps are specifically designed to replace standard T-12 Slimline Single Pin, Medium Bi-Pin and RDC fluorescent lamps, as a more energy efficient and low maintenance lighting alternative. With minimal sign rewiring, these LED lamps consume half the wattage of traditional lamps while producing the same amount of sign brightness. They last several times longer than the fluorescent lamps, thereby drastically reducing maintenance, provide less risk to crews in high traffic situations and provide for reduced traffic low interruptions. Prince LED tubes contain no mercury or heavy metals, emit no ultra-violet and are not harmful in any way to the environment.



Wiring Instructions For Street Sign T12 LED Lamps

Turn off power to the sign

Open the lamp chamber of the sign and access the ballast chamber. Disconnect the power to the input side of the fluorescent ballast. Remove the fluorescent lamps and dispose of them per state and federal regulations, for hazardous materials.

NOTE: There Prince LED lamps are to be powered by line voltage across the length of the lamp. The sockets at both ends of the lamp need to be wired as in the diagram below to assure proper operation.

Each socket must have one wire attached. Attach the black power lead to one socket and the white power lead to the socket at the opposite end. This places line voltage across the lamp.

Wire each of the sockets in the manner described above. Physical removal of the now unpowered and unused ballast is optional.

Replace the ballast cover.

Install the Prince LED lamps in the rewired sockets. **During lamp installation, be sure not to touch the pins since electrical shock may result if voltage is present.** When using Bi-Directional lamps in a double sided sign, the lamp may be put in the sockets either end first. If using single direction lamps in a single direction sign, make sure that the LED board is facing the rear of the sign face to be illuminated.

Close the fixture and restore power. The lamps will instantly light.

NOTE: if the LED tube is flashing, the tube is signaling that the wiring is not correct. Start over and make sure all of the steps were properly followed.

Wiring diagram: Disconnect ballast and power leads on the sign. Rewire as shown.
LED Tube will not operate properly unless the power is wired correctly.

